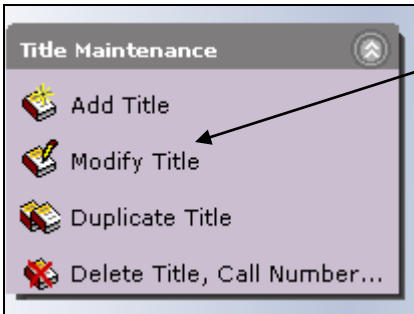
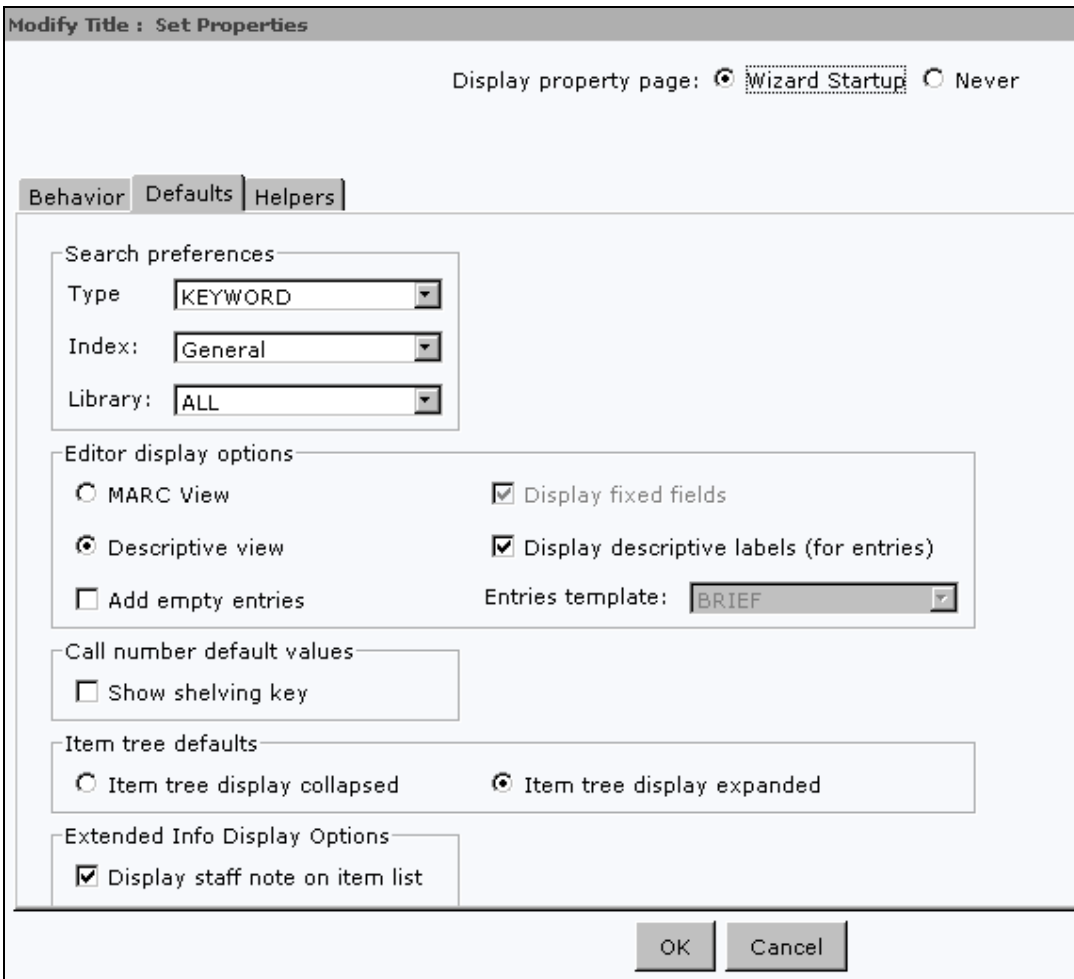


1. Access the Lexile Framework for Reading (<http://www.lexile.com/>) and click on the link for Educators.
 - a. Search for book titles to find their Lexile Level.
2. Login to WorkFlows and access Cataloging
3. Click on Title Maintenance and Select the Modify Title Wizard.



4. Click on OK to accept the Session Settings



5. Search for the title and if necessary, click on the Modify button.

Add a field after the current one.

6. Click on the MARC tag above where you'd like to insert the 521 tag, and click the "Add a Field after the Current Field" button.

7. Type 521 as the MARC tag number.

Label	Tag	Ind.	Contents
<Undefined>	521		

8. The indicator is 8

Label	Tag	Ind.	Contents
Lexile score	521	8	

9. Type in the Lexile code (if there is one), then the Lexile Level, followed by |bLexile as shown below.

Label	Tag	Ind.	Contents
Lexile score	521	8	AD 780 bLexile

10. Click on Save.